

ClaritySwitch Transform



Java-based Application for Building and Executing Data Transformations

Financial institutions today are faced with constant business pressure to widen the availability of legacy applications across a range of different service delivery mechanisms, integrate them with new business applications and adopt new technologies.

These business-driven changes often require modifications to legacy systems, but the specialist skills needed are increasingly scarce. Furthermore, systems that have been changed repeatedly over many years become harder to change, so the costs and risks increase each time.

At A Glance

- Supports extensive message definition routines for legacy systems and external networks
- Message mapping by intuitive drag and drop tools
- Flexible configuration parameters
- Generation of instantaneous testing results
- XML based transformations
- Substantially reduces the cost of implementing new message standards for legacy systems

ClaritySwitch Transform

ClaritySwitch Transform is a highly flexible module from the ClaritySuite product family for building data transformations from a given message format and type to another. ClaritySwitch Transform, an XML Java-based tool, supports extensive message definition routines for all legacy systems and external networks. It can easily import any XML schema for industry standard message sets.

For financial institutions, the flexibility of ClaritySwitch Transform simplifies proprietary format conversions. It supports SWIFT FIN and XML format transformations, e.g. ISO 15022 to 20022 formats (and vice-versa).

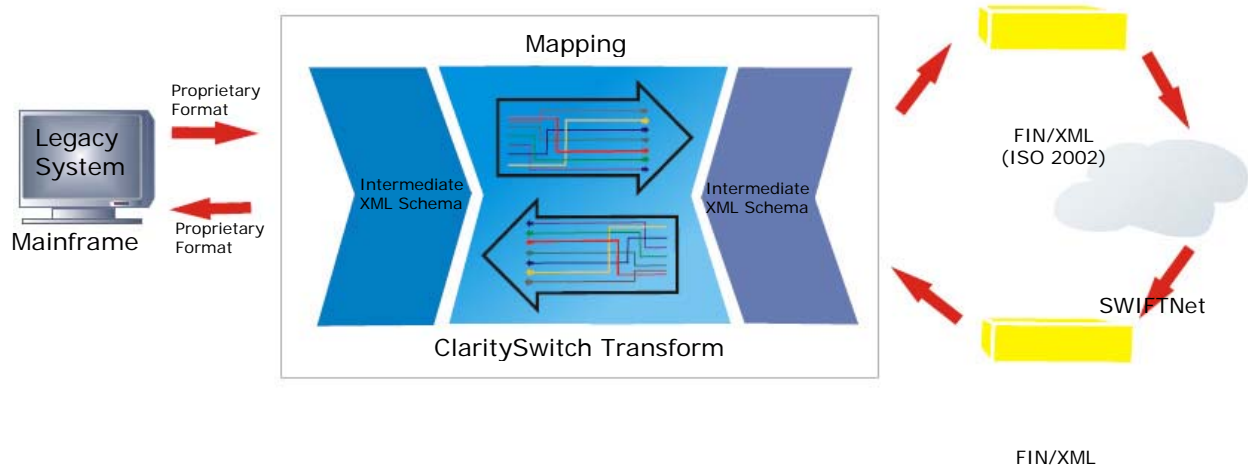


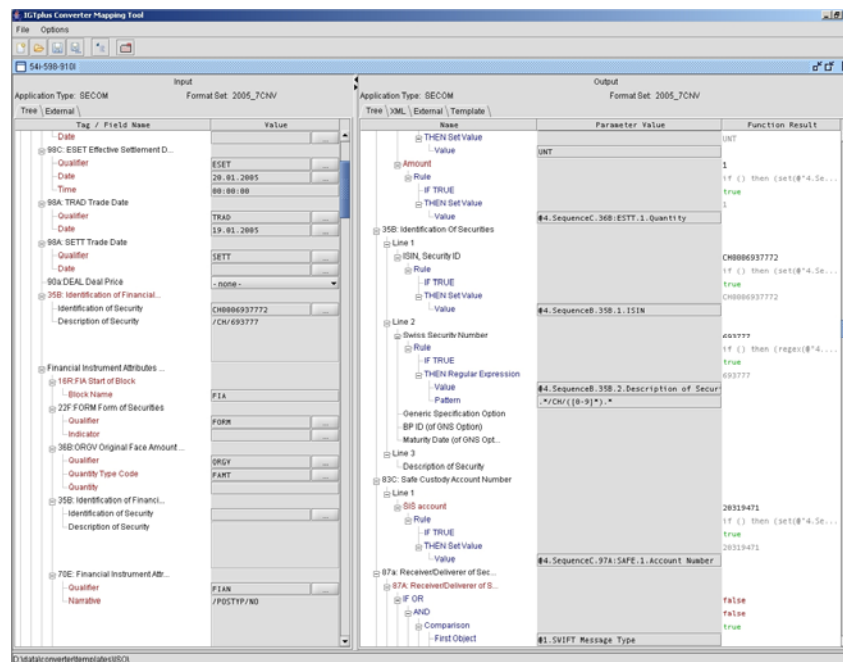
How is ClaritySwitch Transform used?

Messages sent between different networks and applications all contain similar data, but the format of the messages varies. ClaritySwitch Transform provides a configurable means to translate between the message formats needed by different networks and systems.

External networks such as SWIFTNet are liable to annual Message Standard changes. These changes are often mandatory, even though the function supported by the change may not be used immediately. ClaritySwitch Transform acts as a flexible interface layer to insulate applications from the costly changes that would otherwise result.

In many financial applications, the mapping between internal and external formats is embedded into dedicated and fixed software. Changes can be costly and time-consuming. ClaritySwitch Transform can handle message changes, or new interfaces. It can translate messages to the format needed by existing systems. This reduces maintenance load, extends the life of existing systems and allows new services and business functions to be developed in parallel.





Key Features

Field Mapping by Drag and Drop

ClaritySwitch Transform enables you to develop message mapping using intuitive drag and drop tools, making it easier for you to manage the complexities of message mapping.

Flexible Configuration Parameters

ClaritySwitch Transform uses flexible configuration parameters to define how messages will be mapped from one format to another. This GUI-based configuration helps businesses to eliminate the need for costly programming as well as shortening implementation times.

The tool enables you to easily transform field content to the new message format specification. A drop down list gives you access to the functions used to build the mapping rules. Functions include: (Please contact us for a full list)

- Arithmetic +-*/*..., comparisons (equal, not equal, in list,...)
- Concatenation of strings
- Retrieve variables from Java environment
- Multi-line build up of SWIFT narrative fields
- Pattern matching and regular expressions for search/ select sub-strings
- Check presence of fields in input message
- Lookup table for key/ value pairs
- Substitute and select sub strings
- Total sum of values in repeatable fields
- Operations in SQL based data bases

Instantaneous Testing Results

Once message mapping and transformation rules are developed, they can be instantaneously tested with real messages. Generation of an immediate test result greatly simplifies and speeds up the testing and mapping rule correction phase.

Run Time System

The ClaritySwitch Transform Run time module can be operated as a standalone executable for file in/file out or it can be integrated into the ClaritySwitch middleware platform.

Business Benefits

- Faster implementation times for message format changes, new services and new mandates
- Reduced cost of implementation of new message formats
- Flexible messaging interface configuration removes the need for specialist programming
- Easy GUI screen-based maintenance de-skills the job of designing and implementing interfaces
- Extends the life of legacy systems by wrapping and insulating them from change, while allowing new functionality to be built in a modern environment
- Reduced regression test requirements

Functional Summary

Data Transformation

- a) Input format description (mapping to input.xsd)
- b) Graphical representation of mapping
(from input.xsd to output.xsd)
- c) Output format description (mapping to output.xsd)

Message Transformation

- a) View input message and select message elements
- b) View mapping 'script' (XSL)
- c) View output message (result)

Input Elements

The following input elements are currently supported:

- Message format (e.g. FIN, XML, CSV, Excel)
- Message type
(e.g. SWIFTMT 103, SWIFTNet xrma.001.001.01, etc)
- Message data (the actual message contents)

Output Elements

The following output elements are currently supported:

- Message Format (e.g. FIN, XML, CSV, Excel)
Message Type
(e.g. SWIFT MT103, SWIFTNet Xrma.001.001.01, etc)
- Message Data (the actual message contents)

Message Formats- Semi structured formats

The following formats are supported:

- SWIFT FIN
- XML (SWIFT MX)
- COBOL

Message Formats- Unstructured formats

The following formats are supported:

- Flat files (both ASCII and EBCDIC)
- Comma separated files (CSV)
- Excel

Synergy Financial Systems Limited

Nottingham Office
Synergy House, Highfields Science Park
University Boulevard
Nottingham
NG7 2RF
UK

Tel: +44 (0)115 967 7990
Fax: +44 (0)115 967 7933

London Office
42 New Broad Street
London
EC2M 1SB

Tel: +44 (0)207 374 6200
E-mail: marketing@synergy-fs.com
Website: www.synergy-fs.com