

ClarityInfo



Real-time Access to Centralised SWIFTNet FIN Data

Financial institutions have long been aware of the importance of information in their daily operations. However, as the move to real-time within the financial industry has inexorably gathered pace in recent years, the effective distribution of information is now fundamental to business success.

In the arena of SWIFT global financial messaging, it is particularly relevant that an organisation is aware of its traffic flows and exceptions. Concise and timely availability of information can reduce risk and improve operational efficiency

Achieving real time access to your financial data is easy with Synergy's web-based management information system- ClarityInfo.

ClarityInfo is designed to deliver high value information on SWIFTAlliance message data and events. However, the same principles also apply to the other SWIFT Interface systems (IGT Plus, Fastwire, Mint, Merva, etc...).

Flexible deployment options put you in control of your system architecture. ClarityInfo can be :

- Installed on your server infrastructure - easily rolled out as a thin client;
- Hosted in Synergy's SWIFT Service Bureau and securely delivered for thin-client deployment;
- Installed and hosted at your preferred outsourced hosting provider for thin client roll-out.

At A Glance

-
- Management Information System
 - Reports
 - Archiving
 - Comprehensive search capability
-
- XML based "thin client" application
 - Eliminates the burden of administering legacy desktop applications
-
- Centralised management
-
- Easy access to enterprise
 - Wide business data
-
- Segregation of monitoring and investigations from production
-
- Supports all SWIFT Interface systems
-

The Most Comprehensive Browser-based MIS Available For SWIFTNet FIN Messages

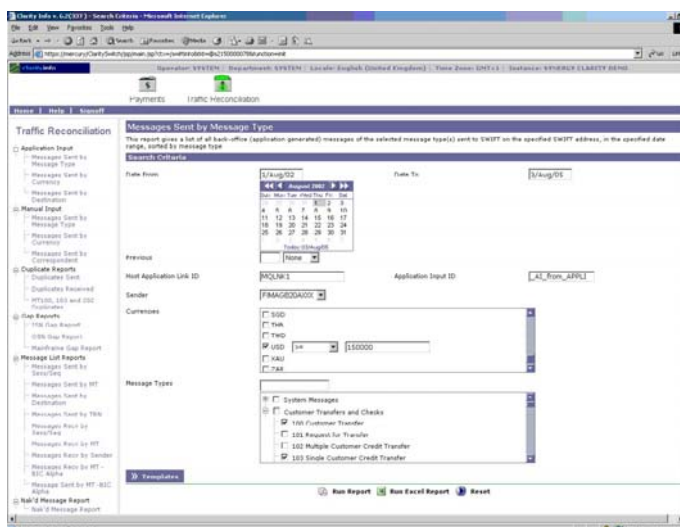
Based on the messages that are exchanged over SWIFT, ClarityInfo can provide you with information to monitor and analyse your SWIFT traffic. It provides a consolidated overview of the activity on SWIFT for real-time liquidity reporting, traffic reconciliation, archiving and message retrieval (investigations).

It analyses traffic volumes and message routes (to and from counterparties and countries) by line of business, geography, and how these evolve over time (trends).

ClarityInfo is used extensively in a wide range of applications, from data aggregation and powerful investigations to monitoring message flows for duplicates.

The software typically addresses issues such as:

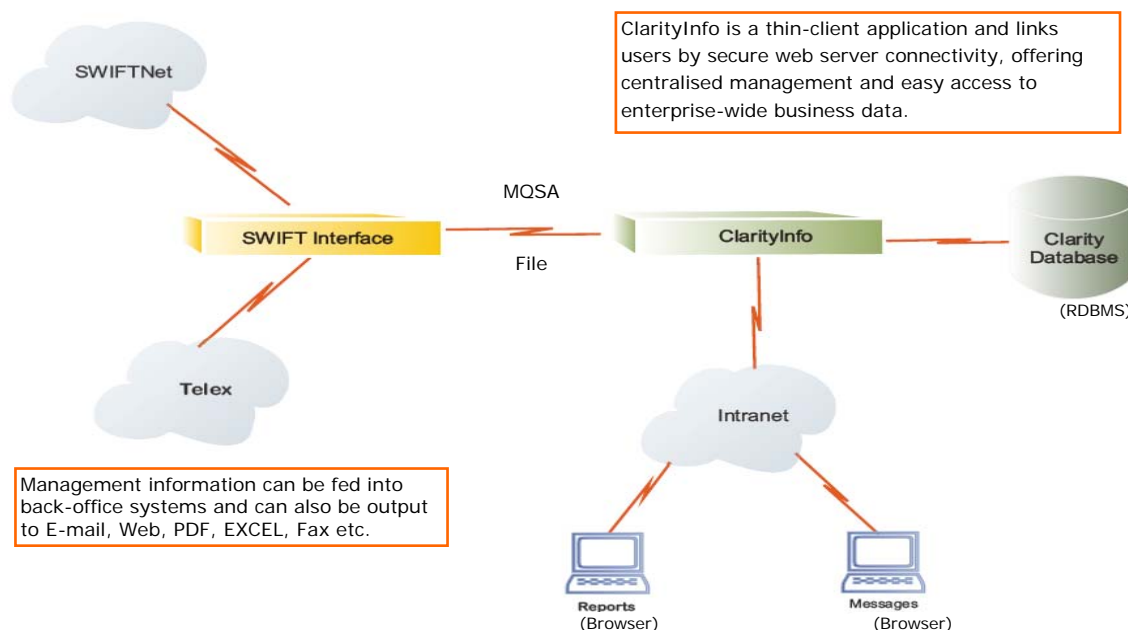
- How many cross-border payments are we sending?
- What geographic route has the highest traffic?
- How many documentary credits are sent out to the Middle East?
- How much are we spending on NAK'd Messages?



Features

- Segregate monitoring and investigations from the production system
- Minimise expensive workstation licenses (e.g. Alliance Workstations)
- Web browser graphical user interface (thin client)
 - easy roll-out and zero desktop administration
- Real-time payments analysis (funds) and traffic exceptions reporting
- Intra-day reports to long-term statistics and analytical views
- Long term archive in Oracle database
- Supports multiple interfaces using MQ, File (AFT), Java API or direct SQL connectivity to database
- Powerful message search to field level
- Output reports to PDF or Excel
- Dual security officer control, with full audit trail
- Roles based security access
- Facilitates production system recovery by maintaining a real-time image of message data

Real-time Access to Centralised SWIFT Information



Key Features

Ready to use reports - ClarityInfo provides 30 pre-defined reports. These reports are split into 2 categories.

- Financial Reports - These focus on FIN financial messages. For example, payments sent, payments received, summary of transactions etc.
- Traffic Reports - These focus on the messages processed by SWIFTAlliance. They provide exception reports (ISN, OSN, Duplicates and Nak's), message lists and statistical information about the traffic generated and received by SWIFTAlliance.

Archiving & Retrieval - ClarityInfo provides powerful archiving and message retrieval functionality to help you find messages quickly and efficiently anywhere in the environment.

By using the powerful and flexible search criteria, users can query the database and search for specific messages.

User-defined Reports - ClarityInfo is extensible, which means that you can modify an existing report or write your custom reports using a third party reporting tool such as Crystal Reports™.

ClarityInfo's database schema is available for this type of user development and integration with other financial applications.

Connectivity – ClarityInfo offers a high degree of connectivity using open communication links such as IBM MQ, TCP/IP Sockets and various batch file formats.

Business Benefits

-
- Offloads SWIFTAlliance from resource-consuming message investigations
-
- Disaster Recovery tool to recover lost messages using the ClarityInfo database and replay to standby SWIFTAlliance server
-
- Remote online access to messages via Web technology, independent from SWIFTAlliance Workstation and concurrent users license
-
- Overcomes SWIFT Alliance constraint of searching either live message file or a one-month archive period
-
- Ability to interface with any external system via a tailor made gateway, using standard SQL
-
- User access to reports, BICs, Units, MTs defined by comprehensive security model
-

Hardware and Software Requirements

ClarityInfo is supported on Microsoft Windows 2003 Server, Sun Microsystems Enterprise Solaris (UNIX) and IBM AIX.

The following is an overview of ClarityInfo's hardware and software requirements.

| Minimum Hardware & Software Requirements - Windows 2003 Server | |
|---|--|
| Platform | Pentium Xeon - 3.0 GHz or higher (dual processor recommended) |
| Operating System | Windows 2003 Server Standard or Enterprise Edition |
| Memory | 4 Gb |
| Disk Space (static) | 300Mb for software install, 20Mb BIC, 50Mb UHB |
| Disk space (database) | Minimum of 40Gb disk space (5Kb per average SWIFT message) SCSI disks and RAID 5 recommended |
| LAN Adapter | 1GB Network Interface |
| Database (RDBMS) | Oracle 10.2g |
| J2EE Server | IBM WebSphere V. 6.1 |
| Minimum Hardware & Software Requirements - Sun Solaris | |
| Platform | Sun Fire T2000 8-core 1.2Ghz |
| Operating System | Sun Solaris 9 or higher |
| Memory | 8Gb or higher |
| Disk Space (static) | 300Mb for software install, 10Mb BIC, 50Mb UHB |
| Database (RDBMS) | Oracle 10.2g |
| Disk | Minimum of 20Gb (5Kb per message coverage) |
| J2EE | IBM WebSphere V.6.1 |
| Minimum Hardware & Software Requirements - IBM AIX | |
| Platform | IBM p520 (two way 1.5 GHz) or higher |
| Operating System | AIX 5L V5.3 |
| Memory | 8Gb or higher |
| Disk Space (static) | 300MB for software install, 10Mb BIC, 50Mb UHB |
| Database (RDBMS) | Oracle 10.2g |
| Disk | Minimum of 20Gb (5Kb per message coverage) |
| J2EE | IBM WebSphere V.6.1 |
| Minimum Client Requirements | |
| Platform | Pentium IV 3 GHz or higher Windows XP |
| Operating System | Professional, Windows Vista, Windows V7 |
| Browser | Internet Explorer 7, 8 |
| Memory | 1Gb or higher |

Functional Summary

Transaction Management

- RDBMS based message warehouse
- Powerful message archiving and retrieval
- Real-time payments summarisation
- Real-time duplicate message detection & reporting

Reporting

- Payments reporting
- Traffic summary reports
- Message list reports
- ACK/NAK control, delivery notifications
- ISN/OSN gap reports
- Nostro balances report

Message Search and Export

- Comprehensive research capability by any field or sub-field of a message
- Export messages to PDF
- Export message search lists to Microsoft Excel

BIC Directory Support

- BIC directory store in RDBMS database
- BIC load utility
- Browser based BIC Finder application

Host Communication Adapters

- MQSA Interface to SWIFTAlliance access
- Automated file input & output (RJE, DOS PC format)
- Java API

Synergy Financial Systems Limited

Nottingham Office
Synergy House, Highfields Science Park
University Boulevard
Nottingham
NG7 2RF
UK

Tel: +44 (0)115 967 7990
Fax: +44 (0)115 967 7933

London Office
42 New Broad Street
London
EC2M 1SB

Tel: +44 (0)207 374 6200
E-mail: marketing@synergy-fs.com
Website: www.synergy-fs.com

Version: 2.0